



# Business Plan and Annual Report 2016

Charity Name	The Starlight Trust
Registration Number	
Principal Address	63 Tharp Road Wallington Surrey SM6 8LG
Website	<a href="http://starlighttrust.org.uk">starlighttrust.org.uk</a>

# Charity Management & Activities

## Managing Trustee Details

Name	Office	Dates Acted
Sarah Argrave	Animal Care Manager, Webmaster	All year
David Argrave	Treasurer, Animal Care Assistant, Animal Rescue & Transport Officer	All year

## Other Trustee Details

Name	Office	Dates Acted
Amanda Lynch		All year

## Constitution and Activities

Type of governing document	Constitution
How the charity is constituted	Trust
Charity Objectives	<p>For the benefit of the public, to relieve the suffering and distress of animals in such ways as the trust shall decide including (but not exclusively) the following ways: -</p> <p>(a) to rescue, take in and provide care, shelter and sanctuary for stray, lost, neglected, abandoned, ill-treated and unwanted pets, primarily small pet rodents, and to rehome these animals wherever possible.</p> <p>(b) To promote humane behaviour towards animals by providing appropriate care, protection, treatment and security for animals which are in need of care and attention by reason of sickness, maltreatment, poor circumstances or ill usage.</p> <p>(c) to educate the public in matters pertaining to animal welfare in general and the prevention of cruelty and suffering among animals.</p>
Activities Undertaken	<p>Founded in 2008, the trust operates a rescue and sanctuary for small pets and feral pigeons from founders Sarah and Dave Argrave's home. In general, there are around 40 animals in our care at any one time. We tend to focus on animals which are vulnerable, in neglect situations, or which have been refused help elsewhere, and on quality over quantity.</p> <p>The trust also runs two websites which offer advice and assistance to the public caring for animals.</p> <p>Helpwildlife.co.uk was set up in 2005 and offers advice on what to do when finding a sick, injured or apparently orphaned wild bird or animal, who to turn to for help and how to resolve conflicts with 'pest' species holistically and humanely.</p> <p>Smallpetsmatter.co.uk was set up in 2012 and aims to promote better care for pet rodents. It offers advice about the husbandry of the most popular species of small pet and a directory of rescues which can help if looking to rehome or adopt such animals.</p>



# The Year Ahead

Charity Structure and Management

Financial Plans and Expectations

Planned Activities

# Quarter 1: January - March

## Financial Summary

Total income this quarter was £1460.79. This was comprised of £934.53 in donations and £526.26 from fundraising activities. This unusual spike in income from fundraising is attributable to nearly £430 raised by Bramble's Fund in one of their online auctions.

Expenditure was comfortably within income at £390.50. £278.96 was spent directly on animal care with the remaining £111.54 being spent on other activities.

## Animal Intake

23 animals were admitted in this period - 15 rats, 7 feral pigeons and 1 wood pigeon.

## HelpWildlife.co.uk

The site received 31,966 visitors. This is a 6% decrease on the same period last year.

## SmallPetsMatter.co.uk

The site received a total of 8663 visitors. This is a 27% increase on the same period in 2015.

## Progress against goals

# Quarter 2: April - June

## Financial Summary

Income this period was £949.11 comprising £909.32 in donations and £39.79 from fundraising activities.

This quarter, expenditure exceeded income at £966.59. £869.68 was spent directly on animal care and £96.91 was spent on other activities.

## Animal Intake

12 animals were admitted this quarter - 1 racing pigeon, 1 domestic pigeon, 8 feral pigeons and 2 wood pigeons

## HelpWildlife.co.uk

The site received 88,634 visitors which is a 16% increase on the same period in 2015

## SmallPetsMatter.co.uk

The site received a total of 8777 visitors. This is a 34% increase on the same period in 2015.

## Progress against goals

# Quarter 3: July - September

## Financial Summary

Total income this quarter was £743.05. This comprised £691.07 in donations and £51.98 from fundraising activities.

Expenditure was comfortably within income at £225.82. £203.16 was spent directly on animal care with the remaining £22.66 going on other activities.

## Animal Intake

15 animals were admitted this quarter - 5 rats, 2 syrian hamsters, 2 racing pigeons, 1 wood mouse, 4 feral pigeons and 1 wood pigeon.

## HelpWildlife.co.uk

The site received 92,724 visitors. This is a 33% increase on the same period last year.

## SmallPetsMatter.co.uk

The site received a total of 9199 visitors. This is a 20% increase on the same period in 2015.

## Progress against goals

# Quarter 4: October - December

## Financial Summary

Income this quarter was a record £4037.07. This was comprised of £1708.50 in donations and £2328.57 from fundraising activities. This spike is attributable to a £1500 grant received from Lush Charitable Pot which is to fund the purchase of new custom cages for the animal room, and just over £700 raised by Bramble's Fund in one of their online auctions.

Expenditure was considerable due to the purchase of the aforementioned cages but, happily, still well within income at £2547.28. £2038.12 was spent directly on animal care, including the new cages, with the remaining £509.16 being spent on other activities. This was largely attributable to some investment in educational and fundraising materials such as leaflets.

## Animal Intake

40 animals were admitted this quarter - 29 rats, 2 syrian hamsters and 9 feral pigeons.

## HelpWildlife.co.uk

The site received 53,209 visitors which is a 44% increase on the same period in 2015.

## SmallPetsMatter.co.uk

The site received a total of 9924 visitors. This is a 22% increase on the same period in 2015.

## Progress against goals

# Annual Summary

## Financial Summary

Annual income totalled £7190.02, by far our best year so far thanks to big boosts from Bramble's Fund and Lush Charity Pot. Otherwise, income from donations was up a little.

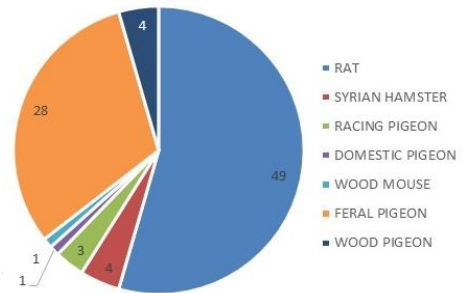
Expenditure totalled £4130.19 so was well within income. Although the vast majority (£3389.92) was spent directly on animal care, a record amount (£740.27) was spent on other activities due to some investment in educational and fundraising materials.

## Animal Intake and Success Rate

A total of 90 animals were admitted in 2016 (compared to 65 in 2015). The graph to the right shows the species breakdown.

During the year 35 animals were rehomed (compared to 22 last year) and 22 were released (compared to 7 in 2015).

Overall, we achieved a 90% success rate against the animals admitted in compared with 93% last year.



## HelpWildlife.co.uk

The site received a total of 266,263 visitors which is a 23% increase on the 2016 total

## SmallPetsMatter.co.uk

There were a total of 36,563 visitors to the site which is a 25% increase on the 2015 total.

## Progress against goals

### Assets

The receipt of over £600 worth of donated goods via our Amazon Wishlist made a sizeable contribution towards keeping expenditure within income levels.

### Liabilities

The trust holds no liabilities

### Balance

We end 2016 with a balance of £3549.30





# Annex A: Detailed Animal Stats

			ADMISSIONS IN PERIOD					ANNUAL SUCCESS RATE*	ANNUAL OUTCOMES		
			Q1	Q2	Q3	Q4	TOTAL		RELEASED	REHOMED	
DOMESTIC	MAMMALS	RATS	RAT	15	-	5	29	49	98%	5	22
		MICE	FANCY MOUSE	-	-	-	-	-	-	-	4
		HAMSTERS	SYRIAN HAMSTER	-	-	2	2	4	100%	1	2
			RUSSIAN HAMSTER	-	-	-	-	-	-	-	-
			CHINESE HAMSTER	-	-	-	-	-	-	-	-
		FIBREVORES	ROBOROVSKI	-	-	-	-	-	-	-	-
			GUINEA PIG	-	-	-	-	-	-	-	-
			DEGU	-	-	-	-	-	-	-	-
			CHINCHILLA	-	-	-	-	-	-	-	-
	GERBILS/JIRDS	GERBIL	-	-	-	-	-	-	-	-	2
	OTHER PETS	DOG	-	-	-	-	-	-	-	-	-
	TOTAL DOMESTIC MAMMALS			15	-	7	31	53	98%		34
	BIRDS	PIGEONS & DOVES	RACING PIGEON	-	1	2	-	3	100%	2	-
			DIAMOND DOVE	-	-	-	-	-	-	-	-
DOMESTIC PIGEON			-	1	-	-	1	100%	1	1	
TOTAL DOMESTIC BIRDS			-	2	2	-	4	100%		1	
TOTAL ALL DOMESTICS			15	2	9	31	57	98%		35	
WILD	MAMMALS	RODENTS	WOOD MOUSE	-	-	1	-	1	0%	-	-
			HOUSE MOUSE	-	-	-	-	-	-	-	-
			YELLOW NECKED FIELD MOUSE	-	-	-	-	-	-	-	-
	TOTAL WILD MAMMALS			-	-	1	-	1	0%	-	-
	BIRDS	PIGEONS & DOVES	COLLARED DOVE	-	-	-	-	-	-	-	-
			STOCK DOVE	-	-	-	-	-	-	-	-
			FERAL PIGEON	7	8	4	9	28	85%	21	-
			WOOD PIGEON	1	2	1	-	4	25%	1	-
		OTHER	CROW	-	-	-	-	-	-	-	-
	TOTAL WILD BIRDS			8	10	5	9	32	77%	22	-
TOTAL ALL WILD			8	10	6	9	33	74%	22	-	
TOTALS			23	12	15	40	90	90%	22	35	

\*Success rate is calculated by taking the number of animals admitted, discounting any which are ongoing or have a neutral outcome, and then dividing that by the number with a successful outcome. Neutral outcomes are, for example, animals which are dead or dying on arrival, those which remain here as permanent residents and then pass away at an expected point, or animals passed to other rescues. Successful outcomes are animals which are released or rehomed.



## Receipts and Payments Accounts

**2016**

Receipts	Q1	Q2	Q3	Q4	TOTAL
<b>Donation</b>					
<i>ADOPTION</i>	10.00	130.00	60.00	200.00	400.00
<i>SURRENDER</i>	30.00	120.00	65.00	-	215.00
<i>SUBSCRIPTION</i>	125.00	115.00	125.00	160.00	525.00
<i>GIFT AID</i>	-	364.47	-	-	364.47
<i>HELPMWDLIFE</i>	-	-	-	-	-
<i>APPEAL</i>	-	-	-	140.00	140.00
<i>OTHER DONATION</i>	769.53	179.85	441.07	1,208.50	2,598.95
<b>TOTAL DONATIONS</b>	<b>934.53</b>	<b>909.32</b>	<b>691.07</b>	<b>1,708.50</b>	<b>4,243.42</b>
<b>Fundraising</b>					
<i>SALE</i>	-	-	-	-	-
<i>GRANT</i>	428.89	-	-	2,208.00	2,636.89
<i>EVENT</i>	-	-	-	43.65	43.65
<i>ONLINE</i>	97.37	39.79	51.98	76.92	266.06
<b>TOTAL FUNDRAISING</b>	<b>526.26</b>	<b>39.79</b>	<b>51.98</b>	<b>2,328.57</b>	<b>2,946.60</b>
<b>OTHER</b>	<b>-</b>	<b>-</b>	<b>-</b>	<b>-</b>	<b>-</b>
<b>TOTAL RECEIPTS</b>	<b>1,460.79</b>	<b>949.11</b>	<b>743.05</b>	<b>4,037.07</b>	<b>7,190.02</b>

Payments	Q1	Q2	Q3	Q4	TOTAL
<b>Animal Care</b>					
<i>FOOD</i>	24.94	13.60	8.98	92.13	139.65
<i>HEALTH/HYGIENE</i>	-	113.22	-	48.00	161.22
<i>HOUSING/ENRICHMENT</i>	44.58	90.36	-	1,558.96	1,693.90
<i>VET/MEDICAL</i>	209.44	652.50	194.18	339.03	1,395.15
<b>TOTAL ANIMAL CARE</b>	<b>278.96</b>	<b>869.68</b>	<b>203.16</b>	<b>2,038.12</b>	<b>3,389.92</b>
<b>Other</b>					
<i>FEE</i>	1.89	3.28	10.78	5.03	20.98
<i>IT/TELEPHONY</i>	47.25	12.88	11.88	11.88	83.89
<i>PETROL</i>	10.00	30.00	-	10.00	50.00
<i>FUNDRAISING/ADMIN</i>	22.40	50.75	-	327.93	401.08
<i>MISC</i>	30.00	-	-	154.32	184.32
<b>TOTAL OTHER</b>	<b>111.54</b>	<b>96.91</b>	<b>22.66</b>	<b>509.16</b>	<b>740.27</b>
<b>TOTAL PAYMENTS</b>	<b>390.50</b>	<b>966.59</b>	<b>225.82</b>	<b>2,547.28</b>	<b>4,130.19</b>

### POSITION AT YEAR END

BALANCE CARRIED OVER FROM LAST YEAR	489.47
LIABILITIES	-
<b>END OF YEAR BALANCE</b>	<b>3,549.30</b>

Signed: \_\_\_\_\_ Date: \_\_\_\_\_

Signed: \_\_\_\_\_ Date: \_\_\_\_\_